

Mid-Hudson Valley Community Profiles

A Data and Analysis Resource for the Community

Presentation by Erika Rosenberg, Principal

May 30, 2019



Promising Solutions

About the Project

- Designed to provide government and nonprofits with an important tool for assessing and understanding the populations they serve
- Continuously updated, comparative information



- CGR provided data, analysis and website development
- CGR is nonprofit research and consulting organization headquartered in Rochester, NY and founded in 1915 by Eastman Kodak founder George Eastman

MHV Community Profiles – What's in it

- 59 indicators across 9 topics



- Columbia, Dutchess, Greene, Orange, Putnam, Sullivan, and Ulster counties
- NYS and US, wherever available
- Local data for towns, villages and cities

Key Components



- For each indicator
 - Data visualization(s)
 - Text analysis
 - Downloadable data tables (rate and raw)
- Key Trends analysis for each topic, combined into an Overview PDF
- Resources – related data and information

What's New

INDICATOR DASHBOARD

Create your own Dashboard of key indicators

- Data for Columbia, Greene, Putnam and Sullivan counties
- Maps for select indicators
- New indicators
 - Drug-related deaths
 - Living wage
 - Foreign-born residents
 - Income by poverty level (<50%, 50-99%, 100-199%, 200-299%, >300%)

Let's have a look...

www.MHVCommunityProfiles.org

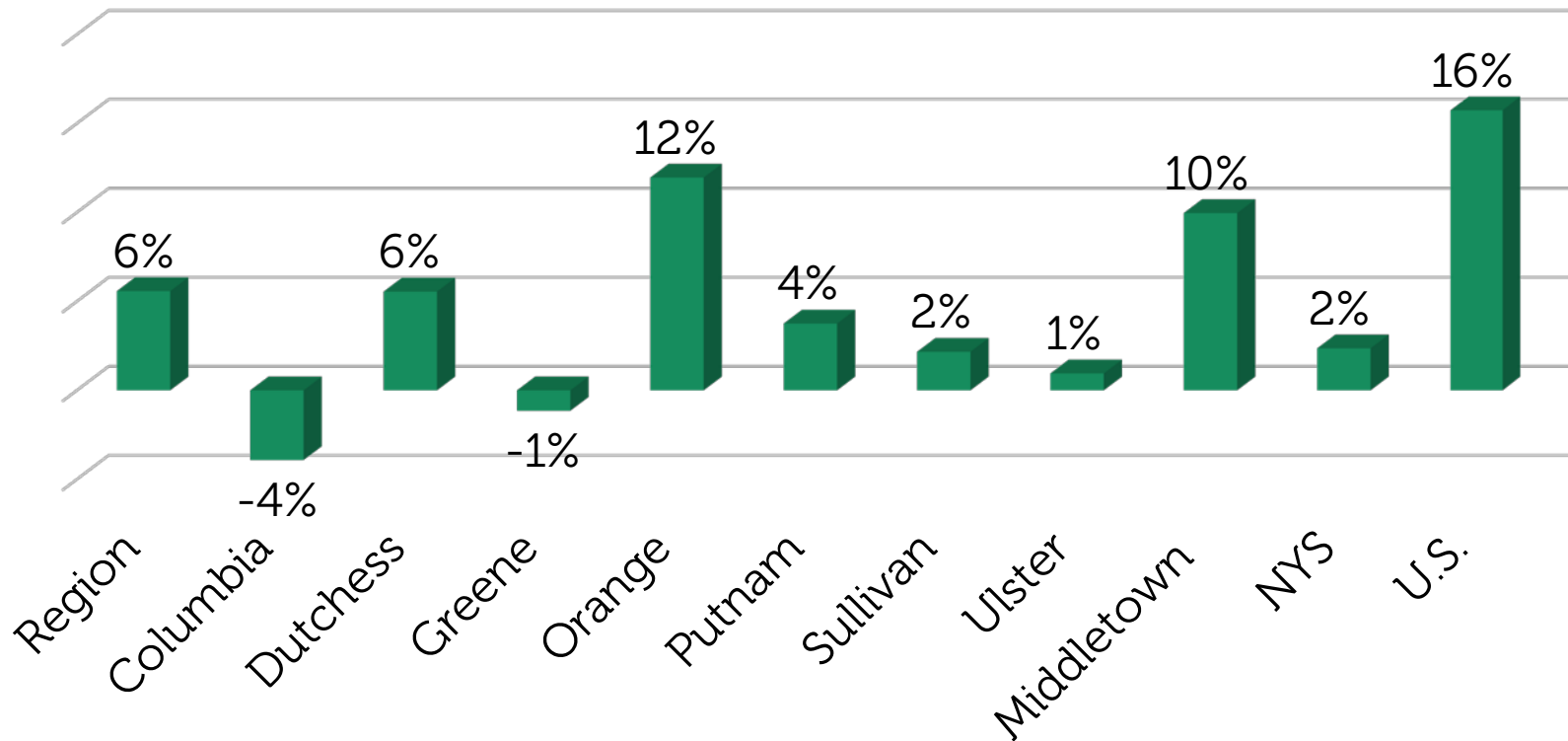
Trends

- The Mid-Hudson Valley continues to be a relatively strong region of New York State
 - Increasing population
 - Higher job growth
 - Rising home values
- Challenges include:
 - Unaffordable housing
 - New challenges, such as the rise of drug-related deaths connected to the opioid epidemic
 - Making ends meet, which can be difficult for a broad swath of the population

Demographics



Population Change, 2000-17



Source: U.S. Census Bureau

Demographics



- Population over 60 growing, while under 40 has shrunk
 - Since 2000, 85+ grew most, up 49%
- Counties becoming more diverse but remain mostly white at 80%
 - Hispanics fastest growing, up 86% from 2000
 - Asian population second fastest growing group, up 74%
- Share that is foreign born increased since 2000
 - Putnam County had the largest share (13%) followed by Dutchess and Orange (both 11%)

Economy

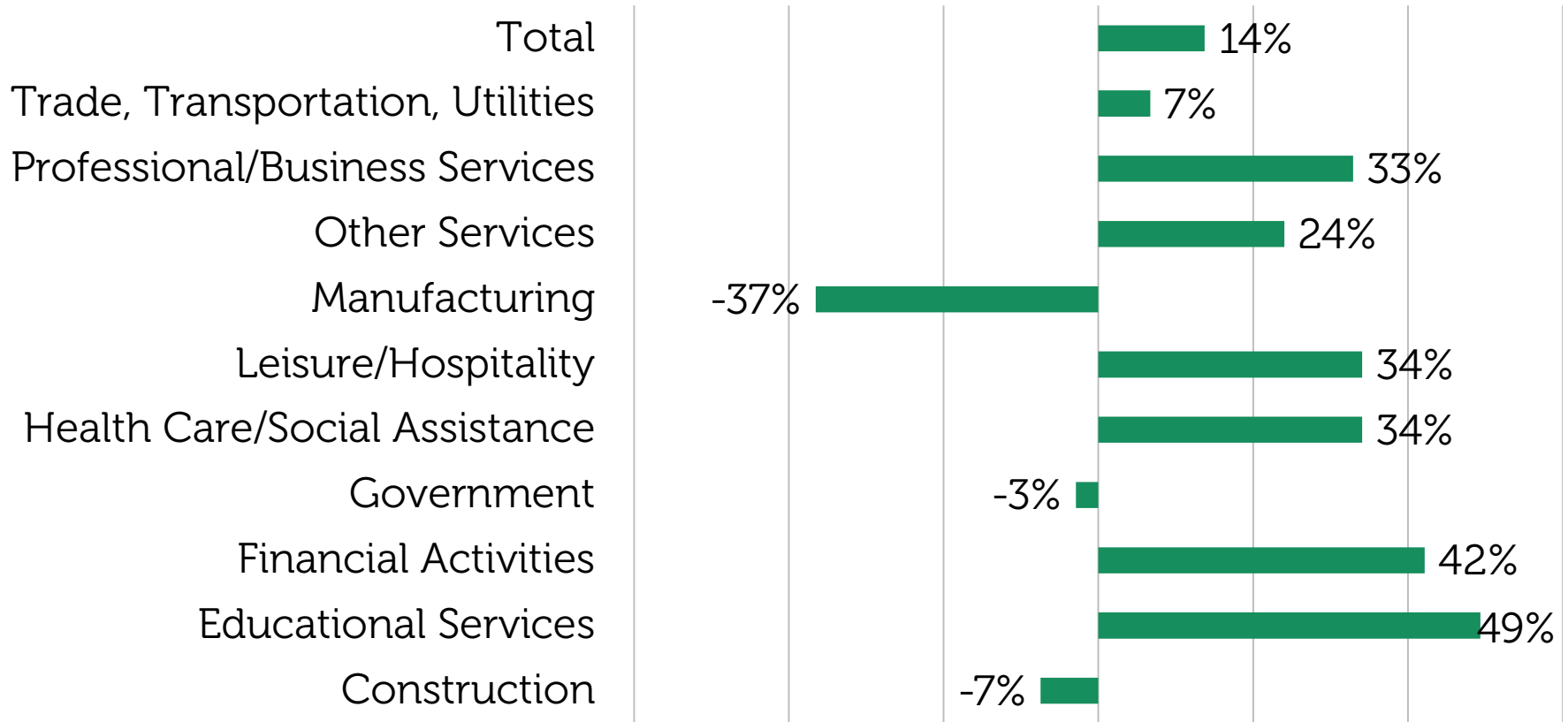


- Jobs grew 13% from 2001-17 in the region, below the nation (18%) but above the state (10%)
- Inflation-adjusted spending by county government grew 14% from 2000-17, compared to 3% statewide
 - Regional level was \$2,200 in 2017, compared to \$2,400 for the state
- Tourism revenue increased 11% since 2005
 - Tourism brought about \$2,200 per capita into the region in 2017, above state level of \$2,100
 - Strongest in Sullivan and Greene counties on a per-capita basis

Economy



Change in Jobs by Sector, 2000-17



Source: U.S. Bureau of Economic Analysis

Financial Stability



- Poverty is relatively low at 11% for the region
- But 28% of residents had incomes 100%-299% of the poverty level
- Living wage models estimate two working parents with two children need to earn \$86,000 a year, more than three times the poverty level (about \$25,000) for a family of this type
- A single earner with two children to support needs an even higher wage, \$79,000 a year, to make a living wage

Financial Stability



- Median incomes higher than state and nation but not keeping up with inflation
 - Incomes declined 4% 2000 to 2013-17 to \$70,150
- Racial/ethnic disparities: Asian and white: \$100,400 and \$73,000; African American and Hispanic: \$52,500 and \$58,500
 - Mirrored in poverty: Asian and white: 8%, 10%; African American and Hispanic: 20%, 17%
- About 7% of seniors and 5% of veterans were living in poverty in 2013-17

Financial Stability

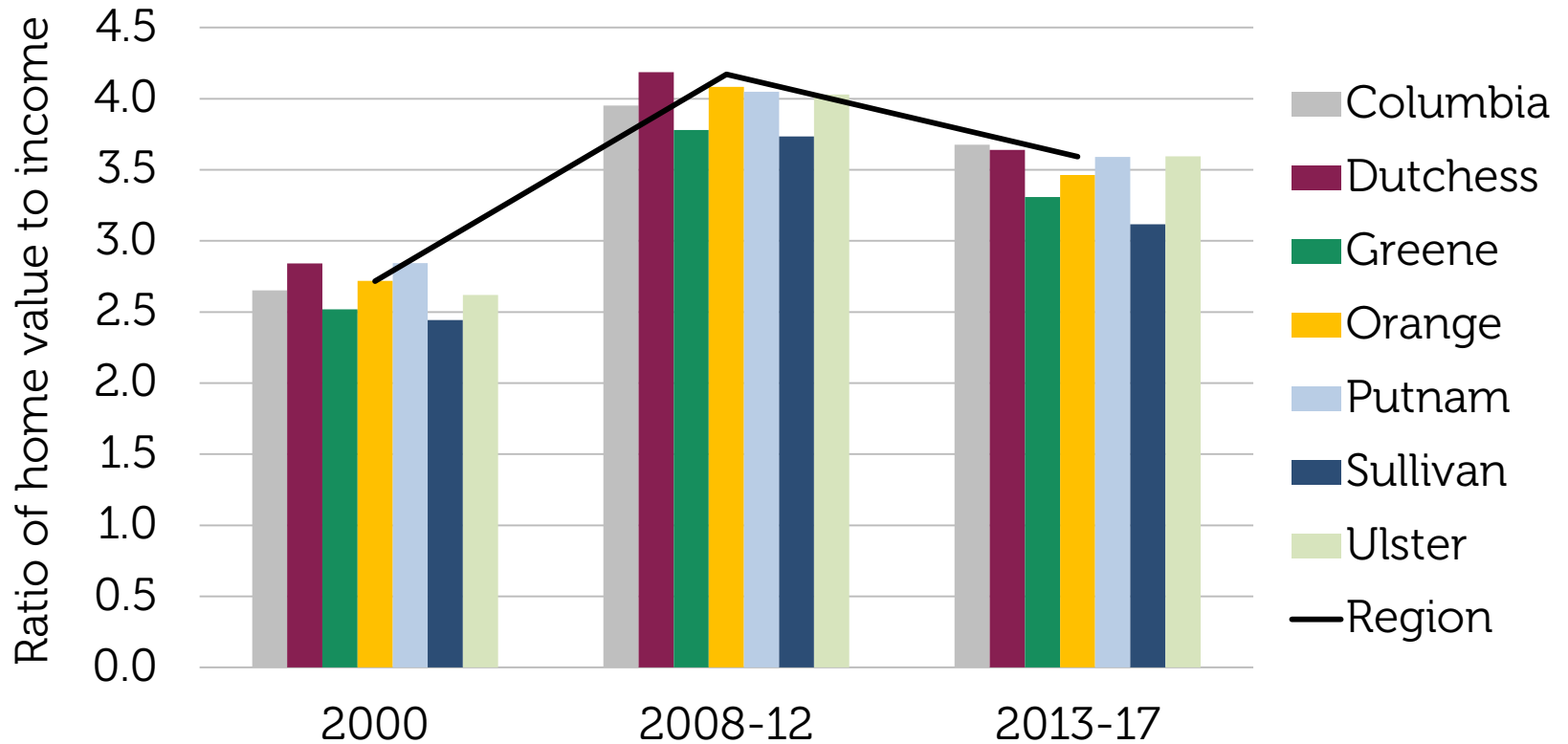


- Help for struggling individuals and families
- 1.5% of children participated in subsidized child care in 2017
- 14% of tax filers in the region received the Earned Income Tax Credit (EITC) in 2016, on par with the state and below the nation (18%)

Housing



Affordability Ratio for Homeowners

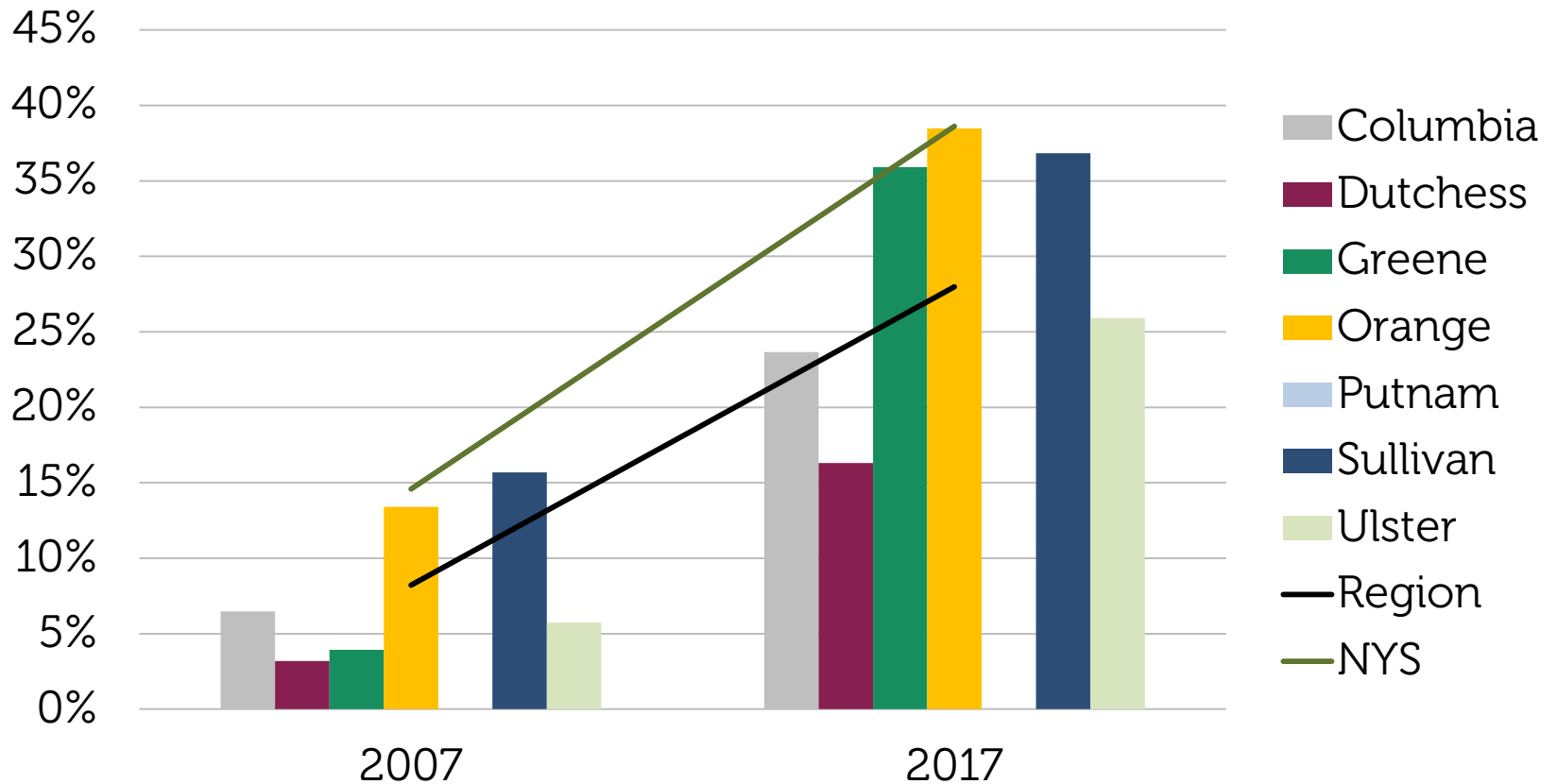


Source: U.S. Census Bureau

Children & Youth



Prekindergarten Participation

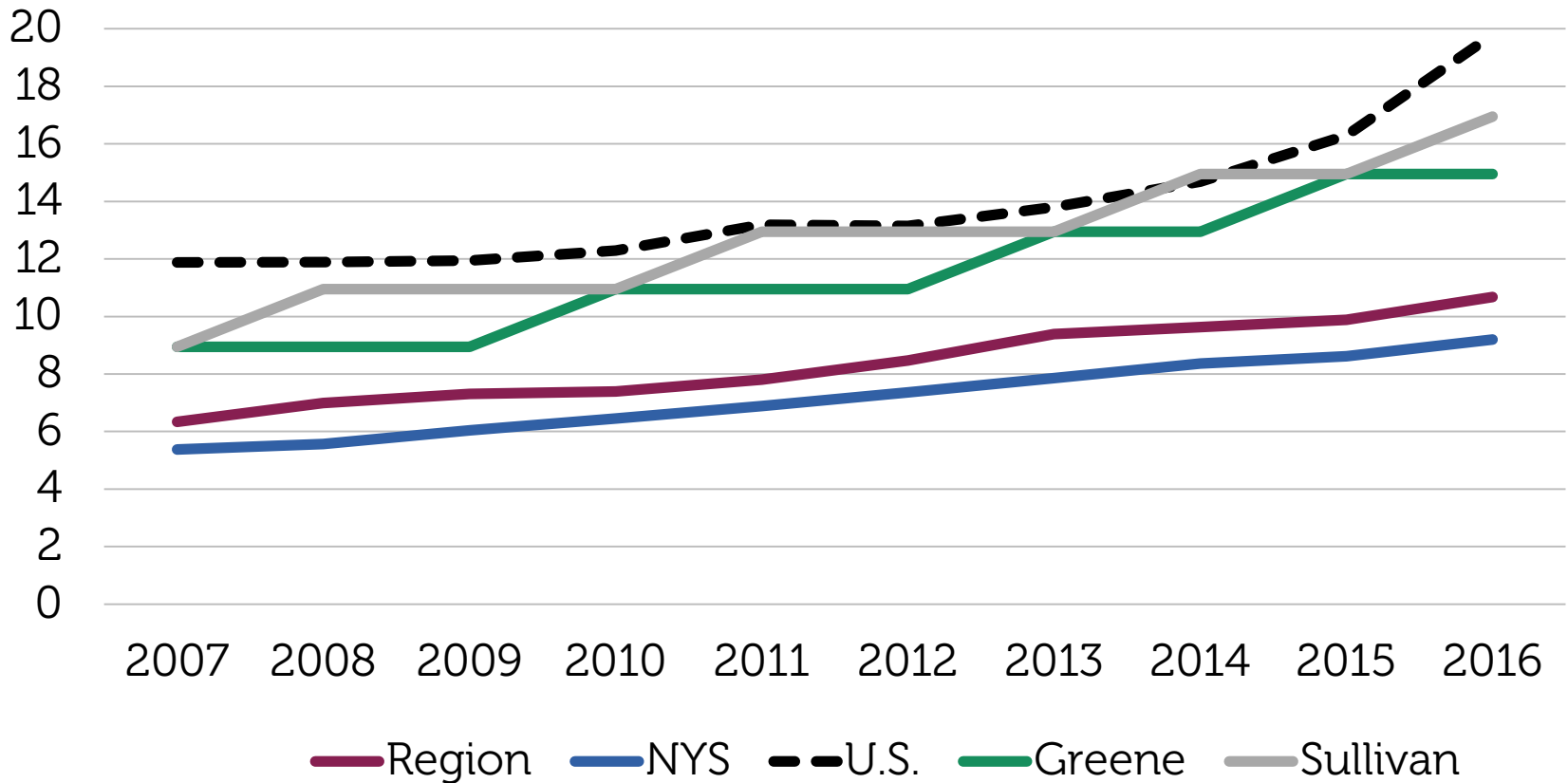


Source: NYS Education Department

Health



Drug Overdose Mortality Rate, per 100,000 Residents

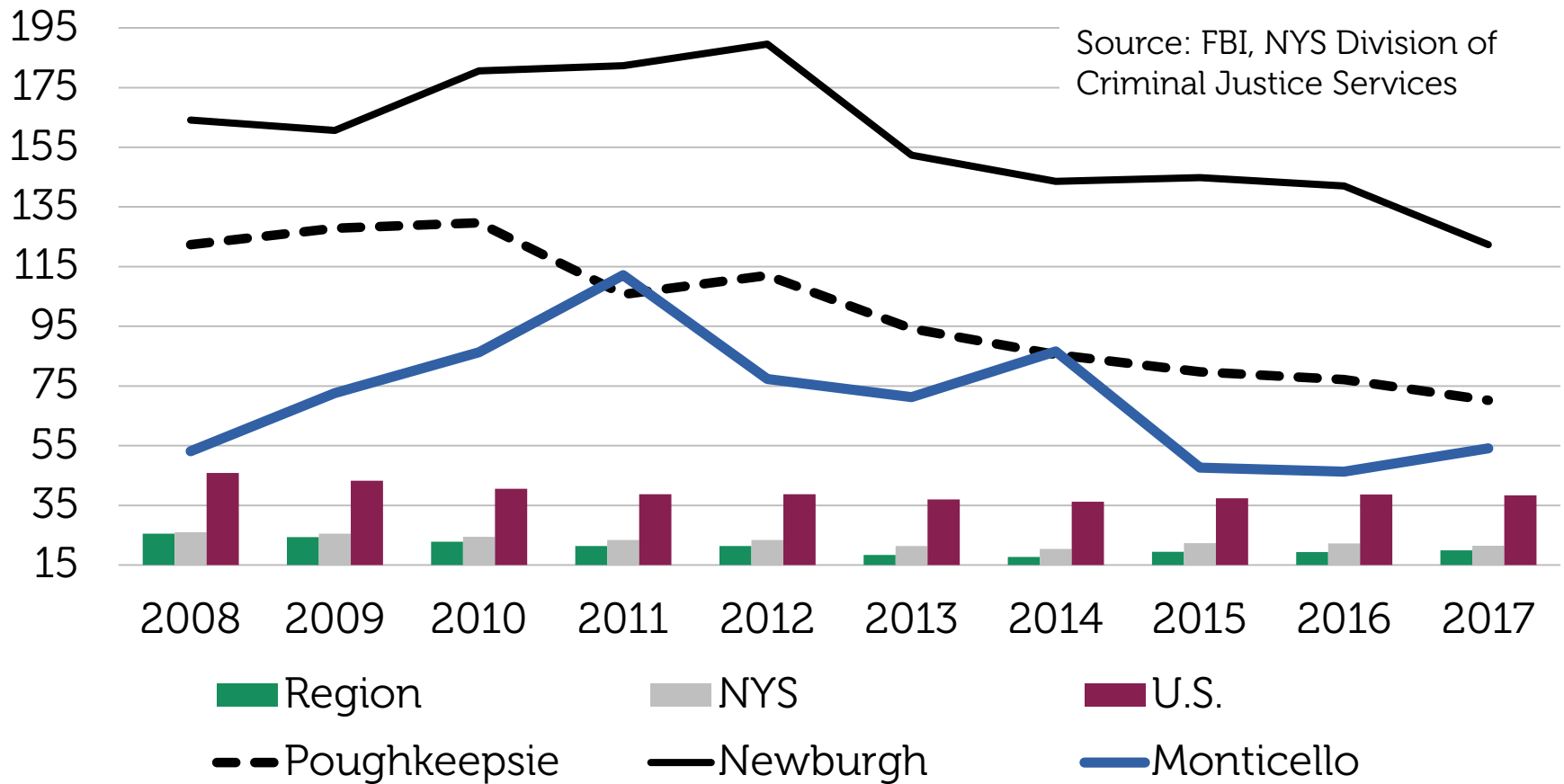


Source: Centers for Disease Control and Prevention

Public Safety



Violent Crime Rate, per 10,000 Residents



Community Engagement



- Average charitable giving is below the state and nation at \$3,600 in 2016
 - That was up 16% from 2011, below the increases at the state and national levels of 25% and 28%
- Voter registration has remained steady at above 80%, a bit lower than the state
 - 82% were registered in 2017, compared to 84% for the state
- Voter turnout approaches 60% in presidential election years, about even with the state

Q and A



- Questions?
- Contact Information:
CGR
Erika Rosenberg, Principal
erosenberg@cgr.org
(585) 327-7066